

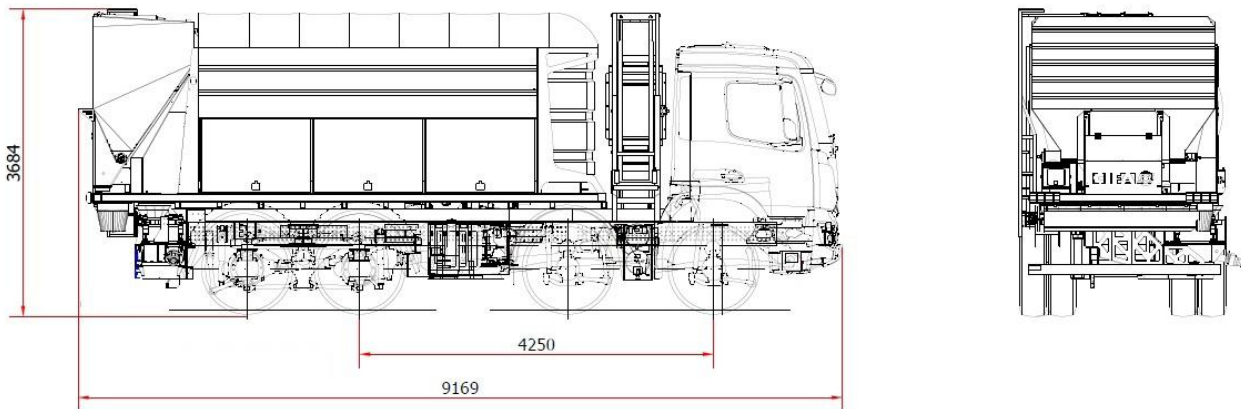
## EASYFLOOR A70

### MOBILE PAVING SYSTEM

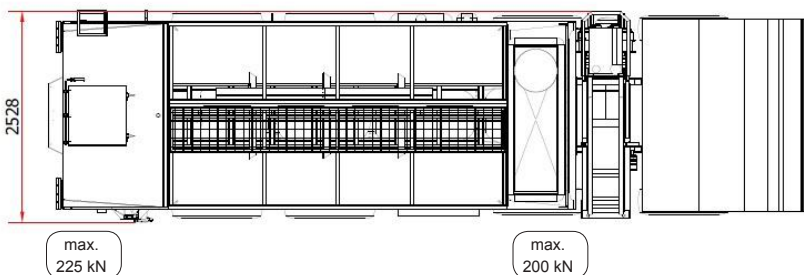
Model	A70
Pumping unit	HP86
Driven by	PTO
Chassis	4 axles



### Dimensions



Dimensions varying according to truck assembly



# EASYFLOOR A70

## Standard equipment

- Advantageous assembling on standard 4 axles chassis with self-supporting frame, torsion free, FEM designed
- Hopper of 14 mc for aggregate material with extracting belt
- 4 Vibrators on hopper's side with automatic temporisation
- Electric cover of the aggregate hopper
- Cement silos with wheight by loss dosing
- Cement vibrator
- Large water tank with dosing pump
- 2 Dosing pumps for liquid admixtures
- 1 Glass fiber dosing unit
- High efficiency
- Centralized lubrication system for dosing and mixing unit
- LED lights for illumination and blinking light
- High capacity tubing winder remote controlled
- Air compressor with hydraulic drive
- Pumping unit with rotating pressurized cilindrs
- Automatic lubrication system for pumping rotor
- Air connection for cleaning accesories
- High pressure water pump 35l /120 bar
- Cleaning hose complete with gun
- Project conforms to Directive Machinery 2006/42/CE
- Electronic control panel with USB port
- Printer
- Remote control for controlling production, mouvements and emergency stop
- Side storage compartments under lock and key
- IoT machine with server connection
- Bi-color paint CIFA orange-white

## Control System

- Blend system
- Integrated color LCD
- Counters
- Concrete production management
- Diagnostic

## Main Options

- Lightened polyurethane piping
- Discharge frame with innovative flow control
- Conveyor belt for direct discharge
- Telescopic conveyor belt for direct discharge
- Aggregate compartment divided into two independent hoppers
- Water pump high dosage low pressure
- Pneumatic loading for premixed material with built-in filtering system
- 3rd dosing pump for liquid admixtures
- Cement silo division divided into two independent silos

## MOBILE PAVING SYSTEM

<b>Model</b>	A70
<b>Pumping unit</b>	HP86
<b>Driven by</b>	PTO
<b>Chassis</b>	4 axles

## Pumping unit technical data

Model	A70	
8x4 Truck PTO		
Total required power	<i>Kw</i>	75
Max theoretical production	<i>Mc/h</i>	8
Max pressure	<i>bar</i>	6
Inert storage capacity	<i>Mc</i>	~14
Cement capacity	<i>Mc</i>	3.5
Water tank capacity	<i>lit.</i>	2000
Additive tank capacity	<i>lit.</i>	2 x 42
Tube winder capacity	<i>mt</i>	180
Pumping height	<i>mt</i>	100
Pumping distance	<i>mt</i>	180
Equipment weight	<i>Kg</i>	~4300

Technical data and characteristics subject to modifications without notice

